

# LT-DC-330/2700-6

Directional Coupler | 330-2700 MHz | 6 dBi

The Lamatel LT-DC-330/2700-6 Directional Coupler is designed for efficient signal sampling and distribution across a wide frequency range of 330–2700 MHz. With a coupling factor of 6 dBi, this device ensures accurate signal splitting while maintaining minimal insertion loss. Ideal for signal monitoring, power measurement, and distributed antenna systems (DAS), its robust and compact design supports stable performance in a variety of RF communication setups, including indoor and outdoor environments.

## Key Features

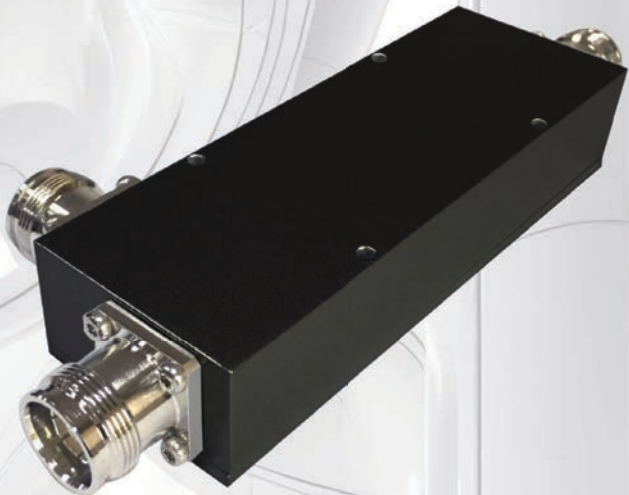
- Wide Frequency Range: 330–2700 MHz
- Coupling Value: 6 dBi for accurate signal sampling
- Low Insertion Loss ensures minimal signal degradation
- High Isolation between input and output ports
- Compact and Lightweight Design for easy system integration
- Durable Construction for reliable indoor and outdoor use
- Suitable for Distributed Antenna Systems (DAS), power monitoring, and signal testing applications

## Key Highlights

- Excellent VSWR Performance for maximum system efficiency
- Bi-directional Design allows flexible installation options
- High Power Handling Capability for demanding RF environments
- Stable Performance Across Wide Temperature Ranges
- Corrosion-Resistant Finish ensures long-term reliability
- Easy Integration into existing RF communication and test setups

## Applications

- Distributed Antenna Systems (DAS) for buildings, tunnels, and stadiums
- Signal Monitoring and Testing in RF communication systems
- Power Measurement in transmission lines



## Specifications

Electrical Specifications		
Frequency		330-2700 MHz
Configuration		6 dBi
Coupling	340-380 MHz	6 ±1.7 dBi
	380-2700 MHz	6 ±1.1 dBi
Distribution Loss		20.8 dB
Insertion Loss		0.8 dB
Frequency Isolation		26 dB
VSWR		≤1.28 @ 340-380 MHz
		≤1.25 @ 380-2700 MHz
Power Capacity		Avg. 300 W, Peak 1.5 kW
Impedance		50 Ω
Intermodulation		≤ -161 dBc @ 2 x 43 dBm
Environmental Specifications		
Environment		ETS 300 019
Operating Temperature		25 °C to +85 °C
Relative Humidity		0 ~ 100%
Application		IP65
Mechanical Specifications		
Dimensions (mm)		177 x 47 x 27 (excluding connectors)
Weight (Kg)		0.66 (4.3-10) / 0.64 (N)
RF Connector		N Female

