

# LT-RF3G350WNM

## 200W RF Attenuator with Wide Frequency Range and Low VSWR

The LT-RF3G350WNM is a high-power RF termination load designed to handle up to 350 watts of power with a broad frequency range from DC to 3 GHz. It is designed for use in demanding applications such as wireless communication systems, including 2G, 3G, 4G, and 10G LTE networks. This load ensures low VSWR and is ideal for in-building and network deployment solutions.

### Key Features

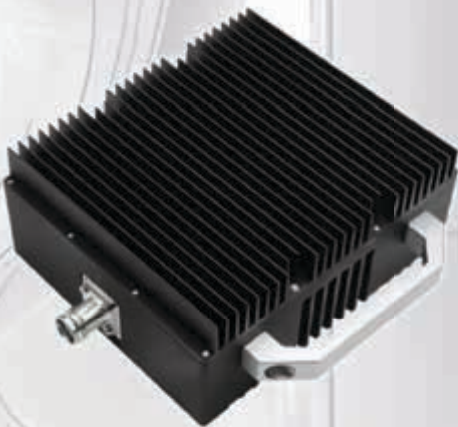
- Wide Frequency Range: Operates from DC to 3 GHz, covering multiple communication bands.
- High Power Handling: Supports up to 200 watts of average power.
- Low VSWR:  $\leq 1.35$  for efficient signal performance and minimal reflection.
- Attenuation Level: Provides 50 dB of attenuation with a precision of  $\pm 1.5$  dB.
- Durable Connectors: N-Male to N-Female configuration for easy integration.
- Wide Temperature Range: Operates reliably from  $-55^{\circ}\text{C}$  to  $+125^{\circ}\text{C}$ .

### Key Highlights

- Compact and rugged design
- Excellent thermal management
- Stable performance across full range
- Ideal for lab, test, and telecom use
- Easy plug-and-play installation
- No maintenance required

### Applications

- Wireless Communication Systems
- In-building Communication Solutions
- Laboratory Testing and Measurement
- Network Deployment and Maintenance



### Specifications

Parameter	Value
Model Number	LT-RF3G350WNM
Frequency Range	DC - 3 GHz
Power handling	350W @ 25°C
VSWR	$\leq 1.30$
Impedance	50 Ohms
Connector Type	N-Male
Color	Black
Operating Temperature	$-55^{\circ}\text{C}$ to $+125^{\circ}\text{C}$
Applications	In-building Solutions, Wireless Communication (2G/3G/4G/LTE)

### Mechanical Drawing

