

LT-Y UHF Series

PRE-TUNED YAGI ANTENNAS (11.2 DBI)

The LT-Y UHF Series are high-gain, pre-tuned Yagi antennas optimized for specific 20 MHz sub-bands between 340–470 MHz. Each model is factory-tuned for its designated frequency range, ensuring maximum efficiency, superior directionality, and strong interference rejection. With 11.2 dBi gain, robust front-to-back ratio, and rugged aluminum construction, these antennas are ideal for long-range point-to-point communications and mission-critical links.

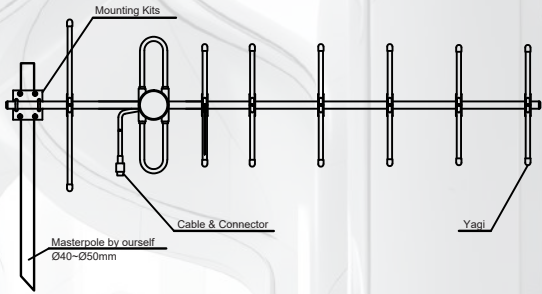
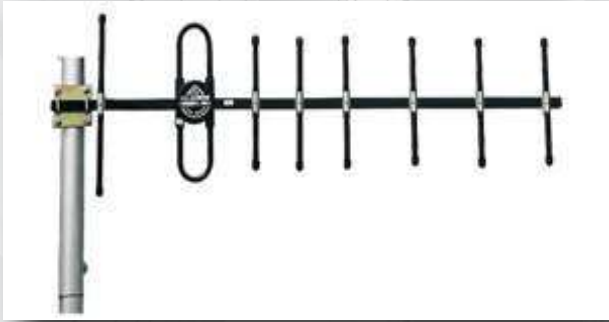
Key Features

- Pre-tuned UHF models for narrow sub-bands
- High gain: 11.2 dBi
- Narrow beamwidth: 40° (V-plane) × 44° (H-plane)
- 100 W input power handling
- VSWR ≤ 1.5
- Front-to-Back ratio ≥ 16 dB for effective interference rejection
- Configurable vertical or horizontal polarization
- Rugged aluminum alloy structure with weatherproof protection
- Supplied with mast mounting hardware (Ø40–50 mm)

Feature	LT-Y UHF Series
Frequency Range	Model-specific (see list below)
Gain	11.2 dBi
Bandwidth	15–20 MHz (pre-tuned)
VSWR	≤ 1.5
Impedance	50 Ω
Polarization	Vertical or Horizontal
Beamwidth (H × V)	44° × 40°
Max. Power	100 W
Connector	N Female (customizable)
Dimensions (Length)	~1.5 m (varies slightly with band)
Weight	~1.0 kg
Elements	8
F/B Ratio	≥ 16 dB
Mounting Pole Ø	40–50 mm
Lightning Protection	By grounding kit / mast grounding

Installation Notes:

- 1- Inspect package on receipt; report any damage or missing parts.
- 2- Mount antenna on pole of specified diameter (pole not included).
- 3- Align antenna for correct polarization with feed-line facing down.
- 4- Weatherproof all cable connections to maintain performance.



Applications

Long-distance point-to-point UHF communications
SCADA, telemetry, and control networks
Public safety, industrial, and utility communications
Anti-jamming applications requiring strong directionality
Transport and energy infrastructure links

Ordering Information

The Lamatel LT-Y Series Yagi antennas are available for both VHF (wideband) and UHF (pre-tuned) applications.

Available Models

UHF Pre-Tuned
LT-Y-340-360-11.2 (340–360 MHz)
LT-Y-380-400-11.2 (380–400 MHz)
LT-Y-400-420-11.2 (400–420 MHz)
LT-Y-410-430-11.2 (410–430 MHz)
LT-Y-430-450-11.2 (430–450 MHz)
LT-Y-450-470-11.2 (450–470 MHz)

Note: UHF models are factory pre-tuned for narrow sub-bands and cannot be adjusted across a wide frequency range.

